



KATHOLIEKE UNIVERSITEIT
LEUVEN



KU Leuven

Leuven in Europe



Leuven



In 2011, the population of Leuven, the capital of the province of Flemish Brabant, was 97,291.

The city covers an area of 5,751.25 ha and is only a stone's throw away from Brussels.



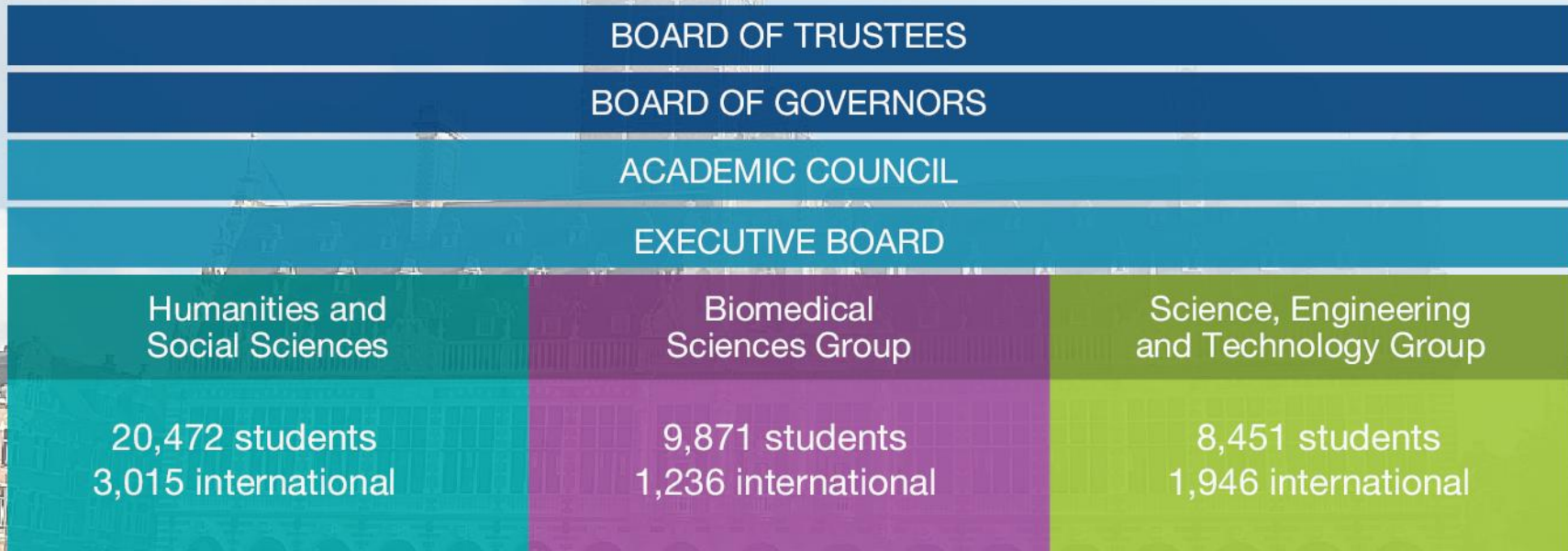
This ancient university town combines rich historical and cultural heritage with a joyful, exuberant city atmosphere and unstoppable creative energy. Leuven is not only age-old, it is alive and kicking!



KU Leuven Organisational Chart

3 groups, 15 faculties

Including the Bachelor's Campus in Kortrijk



3 scientific groups: 3 vice-rectors
 4 cross-group authorities: 4 vice-rectors: Education, Research, Student Affairs, International Policy
 1 vice-rector KU Leuven Kulak

Figures: february 2012

Humanities and Social Sciences Group

Faculties (Education and Research)



Institute of Philosophy



Theology



Canon Law



Law



Business and Economics



Social Sciences



Arts



Psychology and Educational Sciences

Doctoral School Humanities and Social Sciences

- Leuven Centre for Global Governance Studies
- Centre for Premodern Intellectual History (LECTIO)
- Leuven Centre for Irish Studies
- KADOC - Documentation and Research Centre for Religion, Culture and Society



Biomedical Sciences Group

Faculties



Medicine



Pharmaceutical Sciences



Kinesiology and
Rehabilitation Sciences

Leuven International Doctoral
School Biomedical Sciences

Flemish Hospital Network KU Leuven

- 19 Flemish regional hospitals
- 37% of Flemish hospital beds
- Both public and private hospitals

Research Departments

Department of Cardiovascular Sciences

Department of Oral Health Sciences

Department of Pharmaceutical and Pharmacological Sciences

Department of Human Genetics

Department of Imaging and Pathology

Department of Kinesiology

Department of Microbiology and Immunology

Department of Cellular and Molecular Medicine

Department of Neurosciences

Department of Oncology





Department of Clinical and Experimental Medicine

Department of Rehabilitation Sciences

Department of Reproduction, Development and Regeneration

Department of Public Health

Science, Engineering and Technology Group

Faculties	Research Departments
 Science	Department of Earth and Environmental Sciences Department of Architecture, Urbanism and Planning
 Engineering	Department of Biology Department of Biosystems Department of Civil Engineering
 Bioscience Engineering	Department of Chemistry Department of Chemical Engineering Department of Computer Science
 Engineering Technology	Department of Electrical Engineering (ESAT) Department of Metallurgy and Materials Engineering Department of Microbial and Molecular Systems
Leuven Arenberg Doctoral School	Department of Physics and Astronomy Department of Mechanical Engineering Department of Mathematics



Programmes

Programmes

- 55 Bachelor's programmes
- 132 Master's programmes
- 53 advanced Master's programmes

Characteristics

Distinctive vision of education and learning

Culture of quality

Innovative learning environment

Flexibilisation

Internationalisation

Extensive range of education facilities

Figures: 2011-2012 academic year



International programmes

Over 2000 courses taught in English

47 Master's programmes and 31 advanced Master's programmes completely in English

2 Bachelor's programmes completely in English

1 Master's programme in French, 1 advanced Master's programme in Spanish

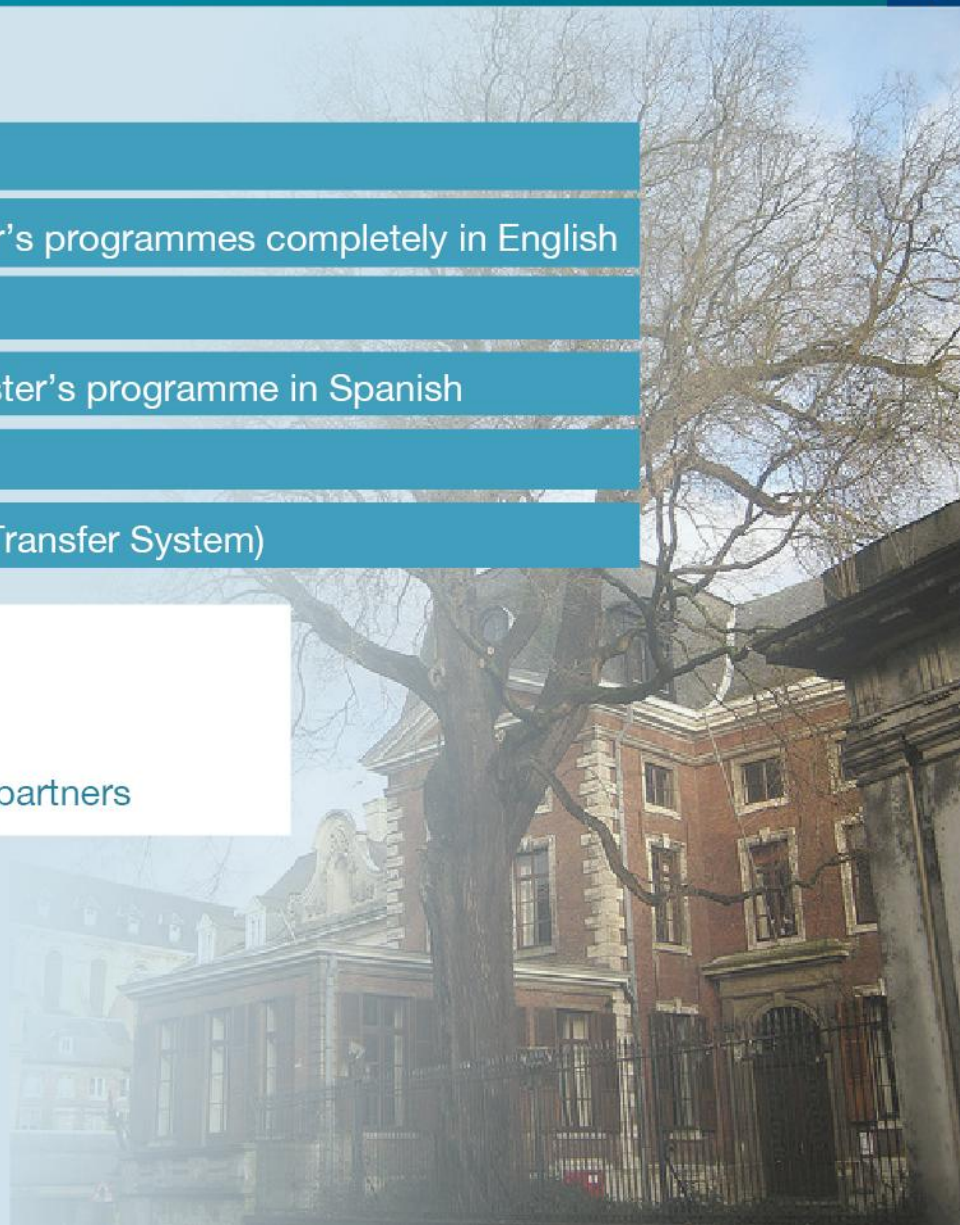
7 Erasmus Mundus programmes

ECTS label: transparent credits (European Credit Transfer System)

37 co-operative programmes:

- 9 joint degree programmes
- 17 double degree programmes
- 11 programmes organised with international partners

Figures: 2011-2012 academic year



Masters Faculty of Science

Programmes in English

Astronomy & Astrophysics

Biochemistry & Biotechnology

Biology

Chemistry

Physics

Geography

Geology

Mathematics

Molecular & Cellular Biophysics

Statistics

Tourism

Masters Faculty of Science

Interfaculty Masters

Bio-informatics

Earth Observation

Nanoscience & Nanotechnology

Erasmus Mundus

Nanoscience & Technology

Theoretical Chemistry & Computational Modelling

Sustainable Territorial Development

Advanced Master

Artificial Intelligence

Financial & Actuarial Engineering

Space Studies

Student Numbers

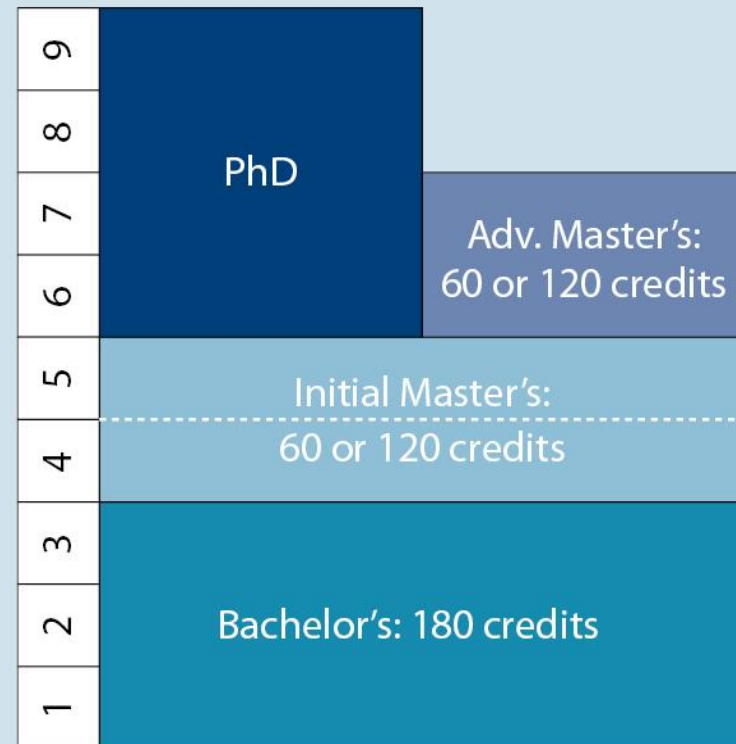
Total number of students: 40,257

- Bachelor 45%
- Initial Master 31%
- Adv. Master 5%
- Doctoral Programmes 11%
- Academic Teacher Training 1%
- Other 7%

Largest student populations:

- Medicine 6,787
- Arts 4,430
- Business & Economics 4,298
- Engineering 4,174
- Psychology & Educational Sciences 7,097

15% first-time students
55% female students



Figures: February 2012



International Short Term Programmes

Short International Programmes

Definition

International Summer Schools

International Short Courses

1 to 4 weeks

Credits

Credits are accepted (3 to 6 credits)

Added Value ?

YES !

Full experience during short period

Different nationalities

Different views

The Leuven Education Gateway to Europe

Leuven / Brussels

Short European Experience

Challenging Research

Technological Hot-spot in Europe

Leuven's answer to International campuses abroad



Higher registration fee -> profit to department

Portal website

Ready made Social Programme

Administrative support (not immediately)

Problem: communication bottom-up difficult



Summer Schools Faculty of Science

International Cooperation

Eminent International Speakers

Intensive and Outstanding academic training

Limited to 50 students

Master or PhD students

2 to 4 per year

Social Programme

A combination of Knowledge, Culture and Architecture

Summer Schools Faculty of Science

Support:

Financial Support

Guide book

Website

Advertising



Thank you for your attention!

Bieke.dutoit@wet.kuleuven.be

